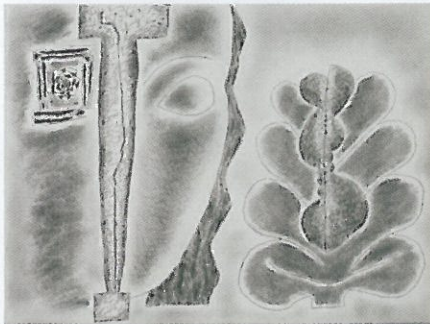
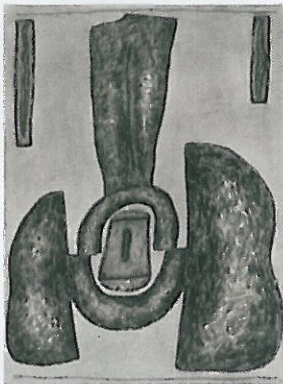


# WILLIAM BRICE: AN ARTIST'S ARTIST

## Drawings 1960–1985



In the 1950s, when abstract expressionism was all the rage and New York was the place to be, William Brice chose to pursue his vision of figurative art in Los Angeles, where he had moved with his famed mother, Fanny Brice (star of stage, screen, and radio), in the late 1930s.

Brice was one of the early graduates of Chouinard Art School and joined the ranks of other LA iconoclasts (who would become contemporary art icons) — Richard Diebenkorn, Sam Francis, Ed Kienholz, Wallace Berman, Robert Irwin, John Baldessari, amongst others — who embraced the freedom of LA's wide-open cultural plain to forge unique artistic visions.

As LACMA curator emeritus Howard Fox states in his excellent essay for the exhibition catalog, "In this milieu, a welcoming, non-doctrinaire embrace of individual visions flourished. Brice's choice to remain in the burgeoning, laid-back, artistically libertine artistic community of Los Angeles proved fortuitous, providing a supportive environment that nurtured his inner nature and enabled this complex, jovial, and pri-

vate soul to develop his idiomatic art in its varying forms. Brice explored numerous stylistic shifts through his artistic development. A rhythm of artistic wanderlust united with an abidance by figuration, eroticism, and sexuality defined his art throughout. Doing what he did — working in quiet isolation in his studio — where he did — in the gregarious, supportive intellectual climate of the emergent Los Angeles art world — enabled him to thrive as 'an artist's artist.'

William Brice exhibited with Peter Goulds at LA Louver from 1980 until his death in 2008. It is clear from the considerable care and attention invested in the beautiful exhibition catalog that the exhibition itself will provide precious insight into one of LA's exceptional artistic talents. ▼ — William Turner

*The essential core to Brice's vision will be on display in an exhibition of the artist's drawings, William Brice, Drawings 1960–1985, which opens at LA Louver November 17th and runs through December 30th, 2010.*