



**FOR IMMEDIATE RELEASE
March 2008**

Gwynn Murrill, Sculptor
Public Art for The Montana, Pasadena, CA
MS Property Company

On-Site Fabrication Ongoing
325 East Colorado Boulevard
Pasadena, CA 91101

Pasadena, CA-

This spring, Los Angeles sculptor Gwynn Murrill has commenced work on a series of monumental artworks for The Montana, a mixed-use development on Colorado Boulevard in the heart of Pasadena. The project, initiated by developer Charlie Munger and MS Property Company, is designed and managed by award winning architects Nakada + Associates, Inc., with landscape architects, Kornrandolph and art consultant Marc Pally. Murrill is currently carving directly into the limestone façade of the building aiming for completion by July 2008.

Murrill's artworks will create a major focal point for both viewing and gathering at The Montana location on Colorado Boulevard, directly across from the Paseo Colorado shopping complex.

The content for Murrill's art within The Montana is based upon aspects of the natural environment and wildlife common in the American West. In particular, Murrill was inspired by the arid climates set in and adjacent to mountains common to many locales, in settings as disparate as the city of Pasadena and the state of Montana.

There are three individual artworks comprising the art program. A life-size cast bronze sculpture of a native San Gabriel Mountain bighorn sheep will be poised atop two columns of rough-hewn limestone blocks (total size of this work will be 10' 7" high and 12' in diameter). Water will gently pour down the sides of the face of the blocks providing a sense of respite during warm weather. This site is situated just off Colorado Boulevard, on the paseo that connects Union Street and the Civic Center.

The most visible artwork, and Murrill's largest to date, will be a dramatic intaglio carving into the limestone panel sections that are situated above the building's main entrance on Colorado Boulevard. She is now carving two large-scaled eagles (one is approximately 9'6" and 42' long, the other approximately 15'6" high and 22' long) into the limestone, creating a flowing narrative for the building's façade. While playing on a long-tradition of architectural ornamentation, Murrill's approach is strictly contemporary in its reductive language and manipulation of scale.

An additional large scale, intaglio carving of a cougar (approximately 8'2" and 19'4" long) will be set into limestone panels measuring 8'6" high by 20' long, on the Euclid Street façade.

A collection of work on this scale is a grand undertaking for any artist, and in this day and age rarely does an artist complete all aspects of the work on their own. Yet at 65, and after more than 35 years as a contemporary sculptor, Murrill continues to defy convention, climbing the scaffolding daily, to create her art.

(continued)



Pasadena's history is rich with artists who focused on the region's natural splendors for inspiration. The art at The Montana is one of the requirements for private development in Pasadena and has been enthusiastically approved by the Pasadena Arts and Culture Commission. Murrill and The Montana aim to build on Pasadena's traditions by furthering them within a contemporary idiom, one respectful of the past but committed to progress in art. The Montana is set for completion fall of 2008. Gwynn Murrill is represented by L.A. Louver gallery. For further information, visuals, and on-site tours/interviews, please contact:

L.A. Louver
Contact: Kimberly Davis
45 North Venice Boulevard
Venice, CA 90291
kimberly@lalouver.com
(310) 822-4955

Other Contacts:

Developer:
MS Property Company
301 East Colorado Boulevard, Pasadena, CA 91101
Contact: Robert Sahn

Architect:
Nakada & Associates
526 W. 6th Street, Los Angeles, CA 90013
Contact: Steve Nakada / nakada@nakadapartners.com
Telephone: (213) 943-4680 Fax: (213) 943-4681

Landscape Architect:
kornrandolph, inc.
Contact: Amy Korn
609 East Green Street, Pasadena, CA 91101
amy@kornrandolph.com
Telephone: (626) 564-0259 Fax: (626) 449-8178

Art Consultant:
Marc Pally
mpally@earthlink.net
(310) 838-3238

Gwynn Murrill, sculptor

Public Art for The Montana, 325 East Colorado Boulevard. Pasadena, CA.
Design renderings and photograph of The Montana.



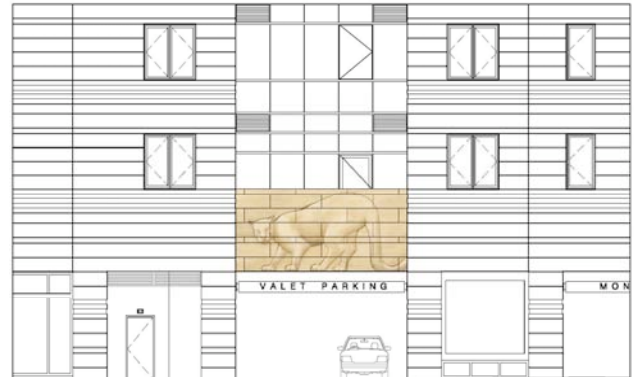
Developer's rendering of Gwynn Murrill's San Gabriel Mountain bighorn sheep poised on two limestone columns on paseo connecting Union Street and the Civic Center.



Photograph of the front façade of The Montana with covering over the area where Murrill is working on the façade. March 2008.



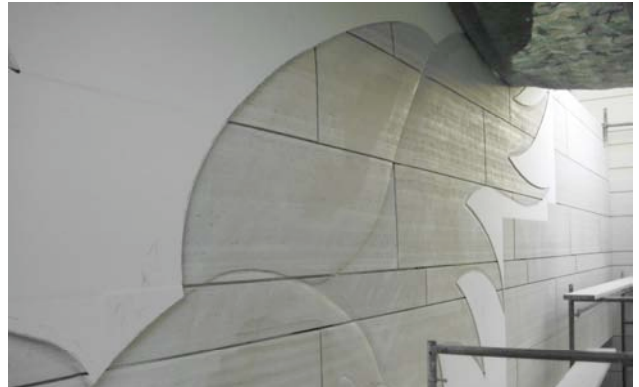
Developer's rendering of Murrill's carving of two large-scale eagles on front façade of The Montana.



Next stage of the sculpture project: Developer's rendering of the cougar Murrill will carve into the Euclid Street façade of The Montana building.

Gwynn Murrill, sculptor

Public Art for The Montana, 325 East Colorado Boulevard. Pasadena, CA.
Photographs of eagle carvings in progress. March 2008.



Gwynn Murrill at work on the eagle carvings.