

# Rogue Wave '07

28 June – 18 August 2007

12 Artists from Los Angeles

Opening reception for the artists:  
Thursday, 28 June, 6:00-9:00 p.m.

**Joseph Biel**  
**Joshua Callaghan**  
**Amir H. Fallah**  
**Portia Hein**

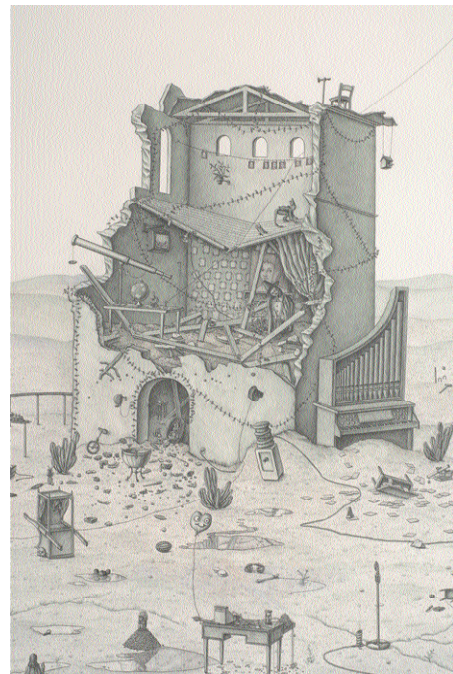
**Dan Ho**  
**Ben Jackel**  
**Osman Khan**  
**Tom LaDuke**

**Euan Macdonald**  
**Sandeep Mukherjee**  
**Eduardo Sarabia**  
**Timothy Tompkins**

Venice, CA – L.A. Louver is pleased to announce *Rogue Wave '07*, which will take place during summer 2007. This is the third exhibition in the *Rogue Wave* series, that aims to capture the spirit and vitality of art currently being made in Los Angeles.

*Rogue Wave '07* encompasses a broad range of media including painting, drawing, sculpture, photography, video, installation and conceptual art. While ranging widely not only in media, but also in subject and approach, the works included in *Rogue Wave '07* are united by common threads. These threads include either a direct or tacit acknowledgment of art history; interest in the frailty of the human condition; an engagement with the environment and political issues, and in the uniformly high level of excellence in the making of the works.

**Joseph Biel** (drawing and painting) is primarily interested in charged human situations. Biel's work offers multiple narrative possibilities where comedy, tragedy, drama and banality collide in meticulously wrought pencil drawings. *Rogue Wave '07* will feature the artist's largest work to date: a tour-de-force surreal landscape entitled *Compound*, 2007, 80 x 82 inches. **Joshua Callaghan** (sculpture and installation) uses humble materials to form complex constructions that re-imagine and reorganize systems in the world around us, while **Amir H. Fallah** (photography, painting and sculpture) works in both two and three dimensions, to create magical worlds where space and flatness, abstraction and representation, converge.



Joseph Biel, *Compound* (detail), 2007, watercolor, prisma color, graphite on Lenox paper, 80 x 82 1/2 in. (203.2 x 209.6 cm)

(continued)

**Portia Hein** (painting) offers fluid interpretations of landscapes that hover between artifice and nature. The new work sees the artist return to the richness of oil paint and a darker palette than in previous years. Questioning and dislocating our everyday perceptions of being and knowing is the primary concern of **Dan Ho** (sculpture). Ho achieves this by creating fantastic new worlds that destabilize our sense of self. For *Rogue Wave '07* the artist will make a living environment for the gallery's skyroom. **Ben Jackel** (sculpture) makes finely crafted, inherently fragile works from ceramic and wood, which address issues of war and territory.

An installation in L.A. Louver's south gallery by **Osman Khan** (new media) explores the subversion of identity and communication through an interactive piece that harnesses satellite technology. Inspired by the palettes and compositions of heroic artists such as Velasquez, Goya and Poussin, **Tom LaDuke** (painting)



Eduard Sarabia, *Stolen Vases 8*, 2005, hand painted ceramic vase and painted wood box, dimensions variable, unique in a series of 10

offers a poetic and haunting image of Los Angeles. LaDuke's paintings interface between TV/movies and a vision of the artist's own domestic environment. **Euan Macdonald** (drawing and video), addresses memory and longing in a series of diptych drawings that juxtapose text and image. Basing his work on found images and by focusing on detail and in the particular, MacDonald conjures vast psychological landscapes that seem just beyond the viewer's grasp.

Process orientated, **Sandeep Mukherjee** (work on paper) creates seductive fields of colored abstraction where dimension is brought forth through the removal and dissolution of inks applied to Duralene sheets. Also materially orientated, **Eduardo Sarabia** (drawing and sculpture) is interested in the process and politics of art making. Sarabia explores the idea that art making is an act of smuggling ideas into culture, and in so doing frequently employs Mexican craftspeople to fabricate his work. The work of **Timothy Tompkins** (painting) deals with political subjects. Utilizing sign-painting enamel on aluminum panel, Tompkins draws on mass media images while acknowledging art historical subjects in his high-keyed canvases.

L.A. Louver is open Tuesday through Saturday, 10:00 a.m. to 6:00 p.m. Validated parking available.

Please also visit *Rogue Wave '07* on our Web site:

<http://www.lalouer.com/roguewave07>

Archived exhibitions *Rogue Wave '01* and *Rogue Wave '05* may also be accessed online:

<http://www.lalouer.com/roguewave>

L | A | L O U V E R

For further information about the artists and for visual material please contact Elizabeth East, L.A. Louver, 45 North Venice Boulevard, Venice, CA 90291 telephone 310-822-4955; fax 310-821-7529; e-mail [elizabeth@lalouer.com](mailto:elizabeth@lalouer.com).